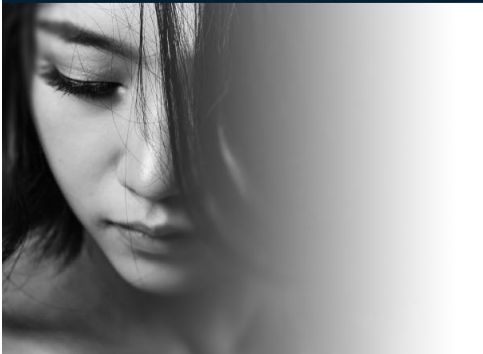




**SISTERS
OF
SOLACE**

Each year, the Missouri Health Care Executive Assistants adopts a charitable organization to support at its annual conference. For 2025, Sisters of Solace was chosen as the organization to receive support by MHCEA members.

Our Story & Values



Sisters Of Solace Is A Community Of Hospitality And Healing For Women Survivors Of Trauma And Addiction Who Have No Place To Call Home

Our year long program is built our core belief – **Lavish love heals**

We value:

- ✔ **Dignity** – We pursue justice for the poor and discarded, intentionally creating a culture that restores dignity
- ✔ **Peaceful Climate** – In contrast to the crisis-driven chaotic life our sisters leave behind, our home is a peaceful sanctuary that creates an environment for healing
- ✔ **Grace-filled Relationships** – Trauma informed care is central to the patient pursuit of trust in the relationships formed with our survivor led team

Core Programs

Residential Healing Program

Our residential program offers a highly structured and systematic plan that helps guide our residents toward healthy and financially independent living. Our program is divided into quarterly phases, each including specific milestones for completion. Through our program, we're able to provide or facilitate access to:

- ✔ Recovery of Personal IDs
- ✔ Access to Healthcare
- ✔ Mental Health Assessment & Care
- ✔ Substance Abuse Treatment and Support Groups
- ✔ GED Preparation
- ✔ Life Skills Training
- ✔ Planning for Independent Living
- ✔ Matched Savings Program for Housing, Education or Purchase of a Vehicle
- ✔ All at NO Cost to Our Residents

Justice Enterprise

We're all created with gifts and talents to offer the world. That's why we place a very high value on employment that restores dignity and makes contribution to our community. **We're a mission with a business.** Our sisters have the opportunity to make beautiful products, learn marketable skills and earn a paycheck. Formerly homeless women have become artisans and business women through our enterprise.

Our products include:

- ✔ 100% clean burning soy candles that are free from dyes and harmful toxins
- ✔ All-natural body products
- ✔ Wax melts

Available at local businesses.

Support Sisters of Solace

VOLUNTEER

We invite you to join us as we bring hope and healing to women in crisis.

Check out these volunteer opportunities at our home.

DONATE

Make your tax deductible contribution online as a one time or recurring gift. Your donation receipt will be promptly delivered via email.

Thank you for supporting SOS!

MEAL TRAIN

Help care for our sisters by providing the evening meal. You and your group are welcome to stay for dinner and get to know us.

For our safety, we ask that you keep our names and information about us confidential.

GO SHOPPING



Use address 3024 Frederick Avenue St. Joseph, MO 64506 to have Amazon ship directly to our home